



EFFECTIVE AND EFFICIENT HOMEWORK SUPPORT



ACCESSLEARNING

COURSE TARGETS

This course is designed for parents of children and adolescents who regularly require homework support because of a learning difficulty, difference or disorder, or are underachieving.

SESSION 1

Understanding learning difficulties and comorbidity

- Overview of learning difficulties and executive functioning deficits
- Diagnostic criteria and the process of diagnosis
- The concepts of comorbidity, occurrence and overlapping conditions
- The fundamentals of educational assessment

SESSION 2

Multisensory teaching of literacy skills

- Literacy skills challenges across the different learning difficulties
- Component parts of supporting literacy tasks
- Introduction to multisensory teaching of literacy skills
- Asking guiding questions and drawing out answers

SESSION 3

Multisensory teaching of math skills

- Math skills challenges across the different learning difficulties
- Component parts of supporting math tasks
- Introduction to multisensory teaching of math
- Asking guiding questions and drawing out answers

SESSION 4

Multisensory teaching of science skills

- Science skills challenges across the different learning difficulties
- Component parts of supporting science tasks
- Introduction to multisensory teaching of science
- Asking guiding questions and drawing out answers

SESSION 5

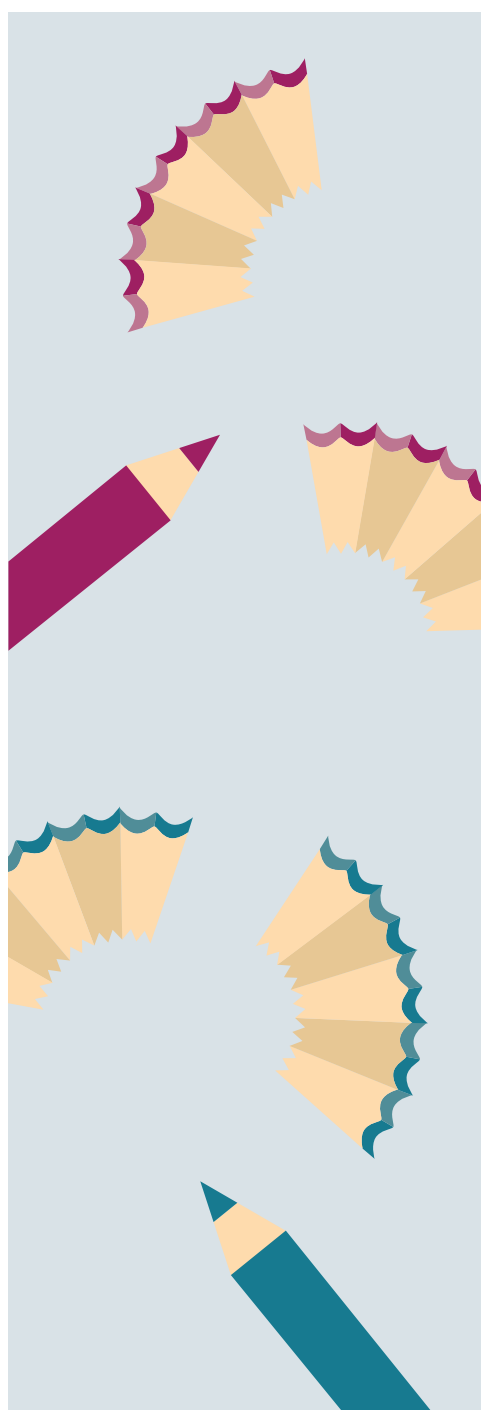
Multisensory teaching of organisation and time management skills

- Time management is life management!
- Overcoming procrastination
- Managing behaviour
- Challenges of parenting a child with a learning difficulty

SESSION 6

Bringing it altogether

- Consolidation of skills
- Creating goals in your role as a homework coach
- Time to discuss in more depth any topics requested
- Supporting one another after the course is over



FEE SCHEDULE

The course is designed for 4 participants. The €250* fee includes six 90 minute sessions. As this course requires a commitment, the fee is to be paid in advance of the first session, and please note that absences are not reimbursed.

*VAT will be charged as of 2016

For Private and semi-private rates please contact AccessLearning

DATES AND TIME

The dates and start time for the six 90 min sessions will be agreed upon by the participants, depending upon schedules. Ideally the sessions will take place weekly.

VENUE

The course will take place in my Flaxweiler home.

TRANSPORTATION

Bus number 135

WHAT DOES IT INCLUDE?

All course materials and refreshments. There will be time in each session to discuss your child's unique profile with the group and for us to work together to support you and your child in improved homework habits.

The price is for the complete 6-session course.

The course must be paid in full prior to the first session.

***"There's no destination.
The journey is all that there is,
and it can be very, very joyful."***

Srikumar Rao

