



TRAINING MENU FOR PROFESSIONALS



ACCESSLEARNING

TAILORED TRAINING

Neurodevelopmental disorders affect approximately 12% of the population and typically impact heavily on learning.

AccessLearning offers tailor made workshops, seminars, as well as short or extensive training courses for educators and other professionals who would like to learn more about neurodevelopmental disorders.

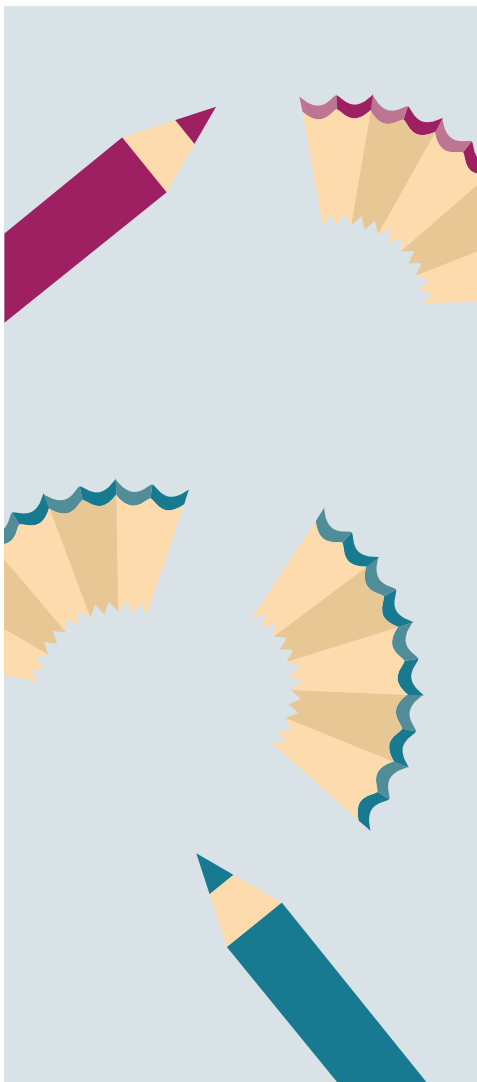
TOPIC MENU

NEURODEVELOPMENTAL DISORDERS

- **Diagnostic criteria and pathways to diagnosis of neurodevelopmental disorders**
 - Fifth Edition of the Diagnostic and Statistical Manual of Mental Disorders (DSM-5)
 - International Statistical Classification of Diseases and Related Health Problems 10th Revision (ICD-10)
- **Overview of neurodevelopmental disorders impact upon learning, for example:**
 - Attention Deficit Hyperactivity Disorder (ADHD)
 - Audio and Visual Processing Disorders
 - Autistic Spectrum Disorders (ASD)
 - Dyscalculia
 - Dysgraphia
 - Dyslexia
 - Dyspraxia/Developmental Coordination Disorder (DCD)
 - Mental Health Disorders
 - Speech and Language Impairment
- **Concept of severity continuum**
- **In depth coverage of any of the above listed neurodevelopmental disorders**
- **Implications of comorbidity, overlapping and co-occurring disorders**
- **Myths about learning disabilities**

EDUCATIONAL ASSESSMENT

- **Understanding the value of educational assessments**
- **How to read and understand educational assessments and the assessment tools used**
- **The philosophy behind access arrangements/testing accommodations**
- **Providing and administering access arrangements and testing accommodations**



DATES AND TIME

When the training format is decided upon, dates and times will be scheduled accordingly.

FEE SCHEDULE

A price quote will be provided upon request. The course syllabus will be created to need and interest.

WHAT THE COURSE INCLUDES:

Tuition includes all course materials.

VENUE:

To be determined.

TOPIC MENU

IMPACT OF LEARNING DIFFERENCES ON:

- Additional language learning
- Attention
- Executive functioning skills
- Family systems
- Individuals
- Literacy
- Mathematics
- Motor skills
- Phonological awareness
- Processing speed
- Social skills
- Test taking
- Working memory

ADDRESSING THE NEEDS OF INDIVIDUALS WHO LEARN DIFFERENTLY

- Best practice strategies for inclusion and differentiation
- Creating learning differently friendly tests and exams
- Multisensory teaching methods and other brain friendly teaching methods
- Imbedding study skills into mainstream lessons and homework support

THE PSYCHOLOGICAL ASPECTS OF LEARNING DIFFERENCES

- Building confidence and a sense of self-worth and value
- Bullying
- Cognitive Behavioral therapy
- The silver lining: the advantages of learning differences
- Power of positivity

